

MASONIC VILLAGE

at Burlington, NJ



Carefree
LIVING





Table of Contents

Retirement Living p. 4
 Cottage Floor Plans p. 5
 Rental Floor Plans pp. 6-7
Care & Services p. 8
 Assisted Living p. 9
 Memory Care p. 9
 Short-term Rehab..... p. 9
 Skilled Nursing p. 9
 Respite Care..... p. 9
 Acacia Hospice & Home Care p. 9
Campus Map pp. 10-11
Contacts Pocket Folder



A Place Among Friends

At the Masonic Village at Burlington, enjoy carefree living and confidence while surrounded by 450 acres of beautifully-maintained grounds, great neighbors and plenty of recreational, social and educational possibilities. Comfort, convenience and security await you.

Masonic Village is one of the largest full-service continuing care retirement communities in New Jersey. *What does this mean for you?*

As a resident of Masonic Village, rest assured that if your needs change, we offer a full array of services to support you, including assisted living, memory care, short-term rehab, skilled nursing, home care and hospice. Additional care is available right on campus, making any future transition seamless.

Explore life at Masonic Village.

Open to Serve. Open to All.





A Vibrant Life

Spend time doing what you love with those you care about most. Stop by Grow Memorial Hall auditorium, the woodshop, the library or the salon located conveniently on campus. Enjoy shows and performances, travel opportunities, music groups and choirs. Volunteer and attend worship services. Stay active with the wellness center and programming, walking paths and putting green. Meet friends to play shuffleboard or billiards or to take in a movie.

Historic Bordentown offers special events, unique dining, shopping and more. Nearby Neshaminy State Park features fishing, walking paths, pools and picnic spots. Take in a Trenton Thunder baseball game, or spend the day in Philadelphia or Atlantic City.





Home Sweet Home

Our cottages and rentals allow you to say goodbye to cooking, cleaning, yard work and home maintenance projects, and say hello to more enriching opportunities.

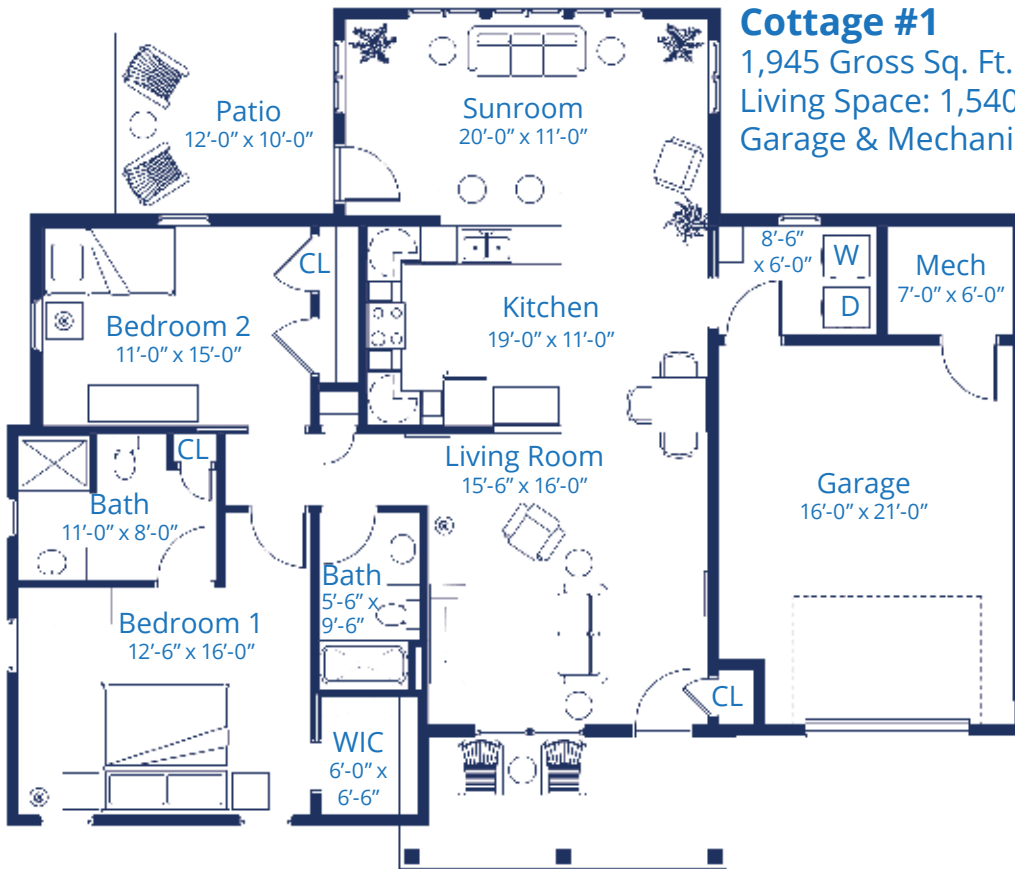
Dine in the restaurant or grab a quick bite in the café. Take advantage of numerous amenities, events and programs.

With a variety of living options to choose from, you'll find the right fit for you. See cottage and rental floor plans on the following pages.

Monthly Service Fee For All Residences Includes:

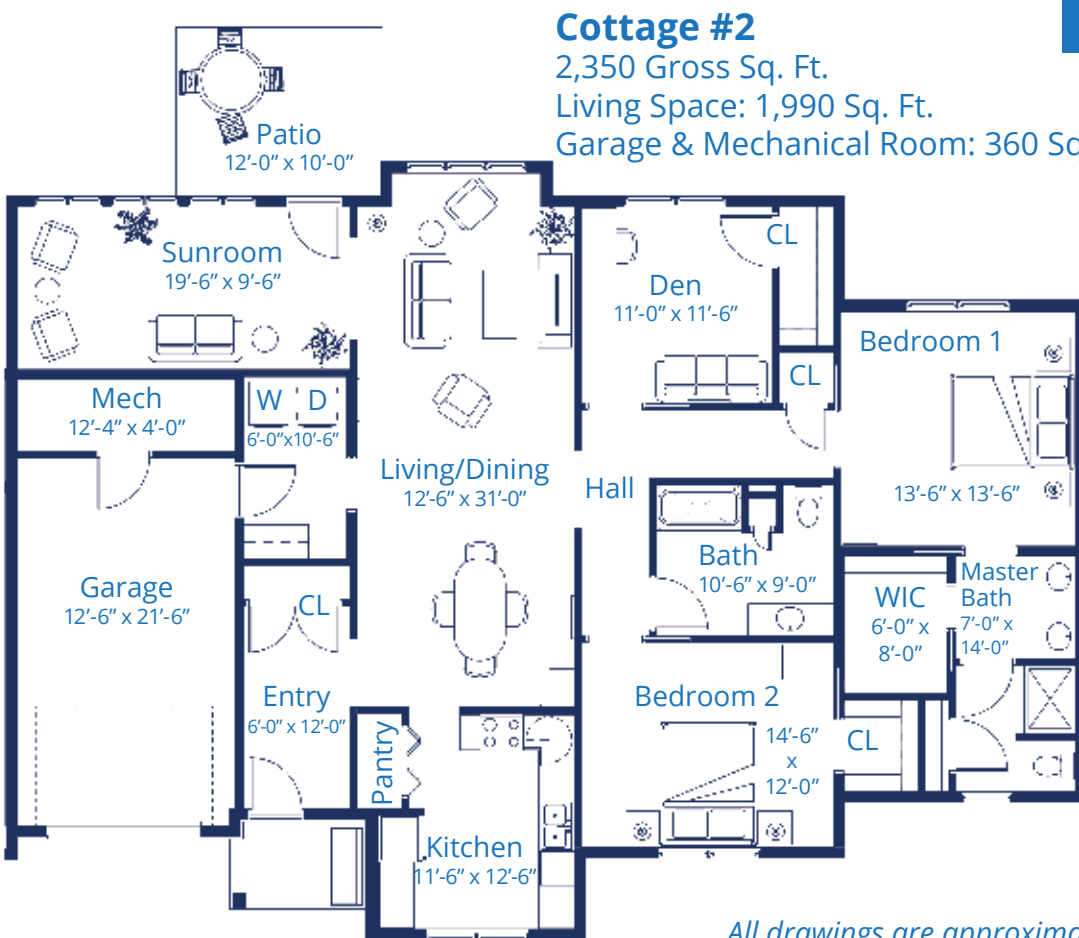
- | | |
|---|------------------------------|
| A flexible dining plan | Trash removal |
| Twice monthly housekeeping | Snow removal |
| Maintenance of furnished appliances | Security |
| All interior and exterior maintenance and repairs | Housekeeping of common areas |
| Heating/air conditioning | Grounds maintenance |
| Water, sewer and electric | Scheduled transportation |
| Property taxes (if applicable) | Use of campus amenities |
| | Recreational opportunities |

Cottage Floor Plans



Each Residence Includes:

- Wall-to-wall carpeting
- Window treatments
- Kitchen appliances (range, refrigerator, microwave, dishwasher)
- Washer and dryer
- Emergency call system
- Individually-controlled heating/air conditioning



All drawings are approximate and may vary slightly.

Rental Floor Plans

Each Residence Includes:

Wall-to-wall carpeting

Washer and dryer

Individually-controlled heating/air conditioning

Kitchen appliances (range, refrigerator, microwave, dishwasher)

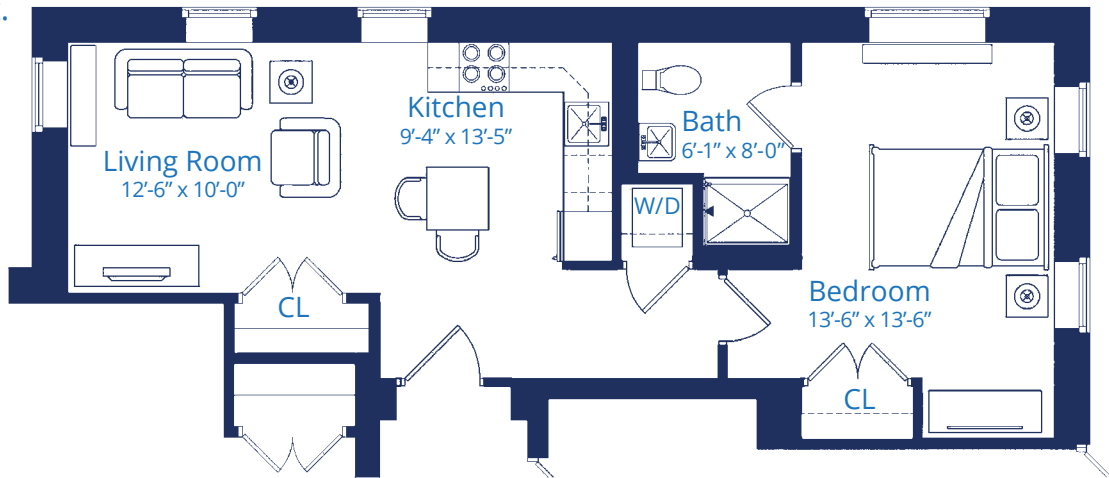
Emergency call system

Window treatments

Storage unit in building

Sample of One-Bedroom Standard

Up to 585 sq. ft.

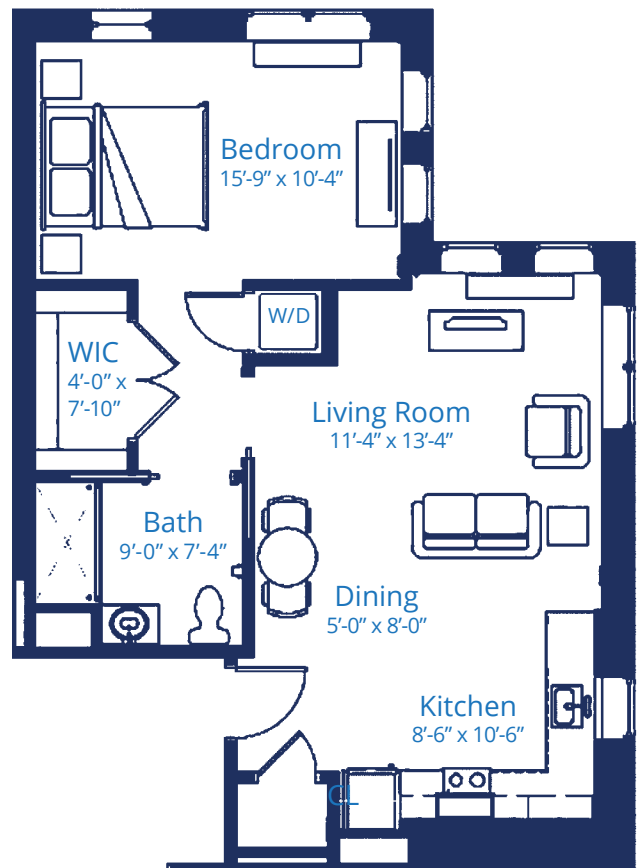
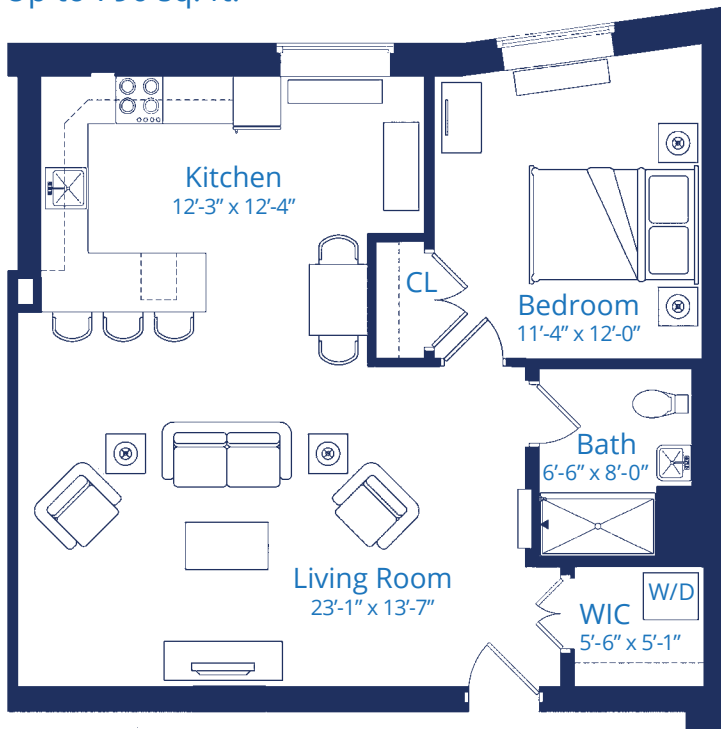


Sample of One-Bedroom Deluxe

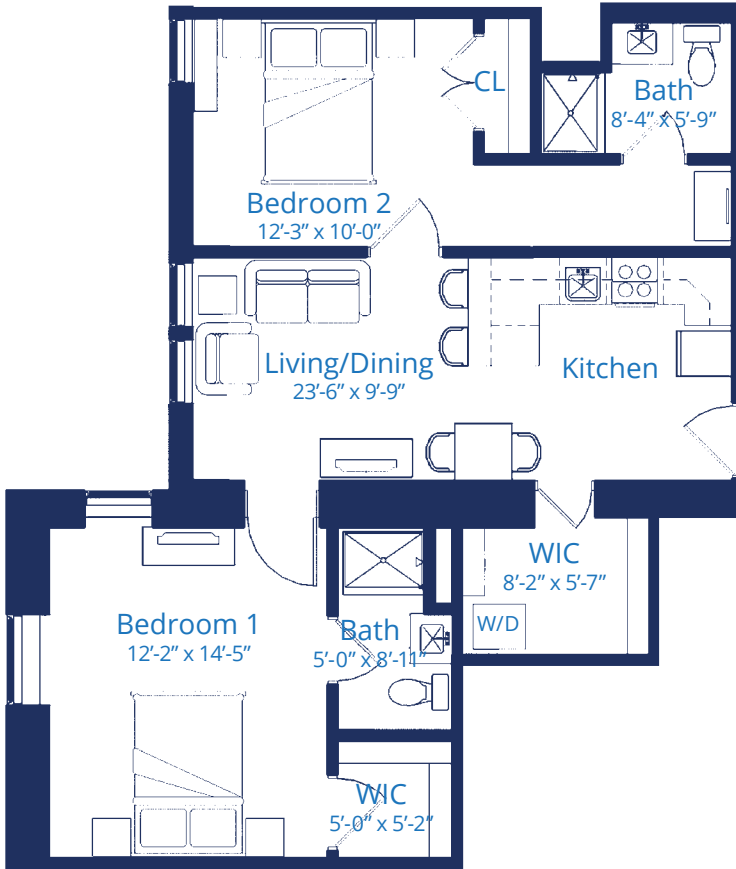
Up to 790 sq. ft.

Sample of One-Bedroom Deluxe

Up to 790 sq. ft.



Rental Floor Plans

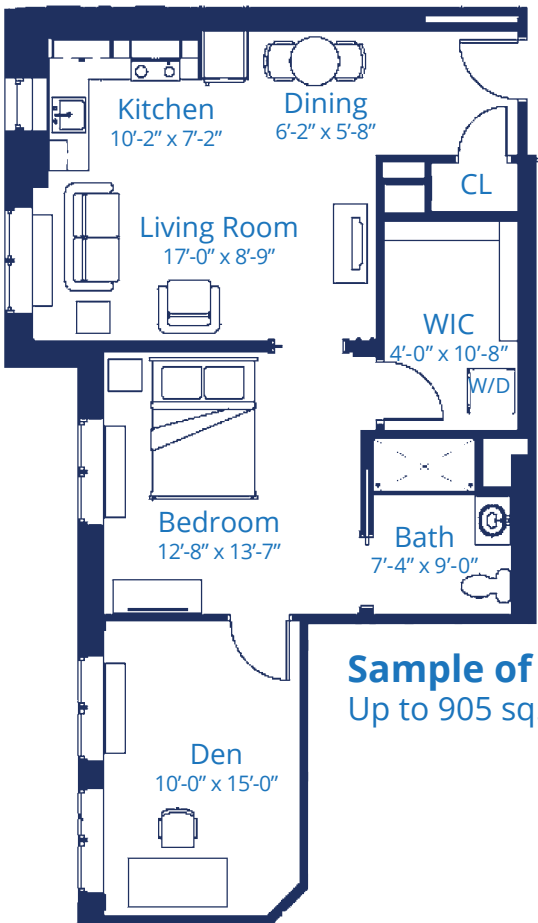


Sample of Two-Bedroom

Approximately 840 sq. ft.

Monthly Service Fee For All Residences Includes:

- | | |
|---|--------------------------------|
| A flexible dining plan | Property taxes (if applicable) |
| Twice monthly housekeeping | Trash removal |
| Maintenance of furnished appliances | Snow removal |
| All interior and exterior maintenance and repairs | Security |
| Heating/air conditioning | Housekeeping of common areas |
| Water, sewer and electric | Grounds maintenance |
| | Scheduled transportation |
| | Use of campus amenities |
| | Recreational opportunities |



Sample of One-Bedroom with Den Standard

Up to 905 sq. ft.



All drawings are approximate and may vary slightly.

A Tradition of Care Since 1898

Should you ever require a more supportive environment, our dedicated and compassionate staff are here to focus on your personal needs and individual preferences.

In addition to receiving high quality care and services, engage in a variety of events, music therapy, pet therapy, worship services, gardening, picnics and more.





Assisted Living

Receive personal assistance in a private suite while you enjoy the people and activities you love most. Masonic Village's caring team assists you with personal hygiene, medications and other daily tasks, while you explore your interests, learn something new or spend time with family and friends.

Memory Care

For individuals with Alzheimer's disease and other related dementias, our team focuses on comfort, dignity, security and stimulation. Specialized programs provide recreation and reminiscing opportunities amidst a secure environment in both assisted living and skilled nursing.

Short-term Rehab

After a hospital stay, let Masonic Village's specialized team accelerate your recovery and ease your transition back home. A clinical nursing team, activity coordinators, therapists, dietitians and social workers, along with spiritual support, help you achieve your goals and resume regular activities.

Skilled Nursing

Masonic Village's professional and dedicated medical team have you covered round-the-clock. Live to your fullest potential and embrace what matters most to you while we ensure your every need is met. Masonic Village at Burlington is Medicare/Medicaid certified.

Respite Care

Masonic Village offers respite care, a guilt-free break for caregivers to refresh and re-energize while their loved one receives meals and medical care, socializes and participates in recreational programs. Schedule a stay on a regular basis or temporarily, as needed.

Acacia Hospice and Home Care

Acacia provides care in the comfort of the patient's home, whether it is located on or off campus.

Hospice may include assistance with personal care, pain control and symptom management; physical, occupational and speech therapy; dietary consultations; social work services; spiritual support and more, overseen by a registered nurse and medical director. Services are often covered by Medicare, Medicaid and most private insurance plans.

Home care staff assist with personal hygiene, medications and other daily activities. Home care services are not covered by insurance, but are paid privately.

22

37

23

24

27

25

27

MASONIC DRIVE

CHAPEL DRIVE

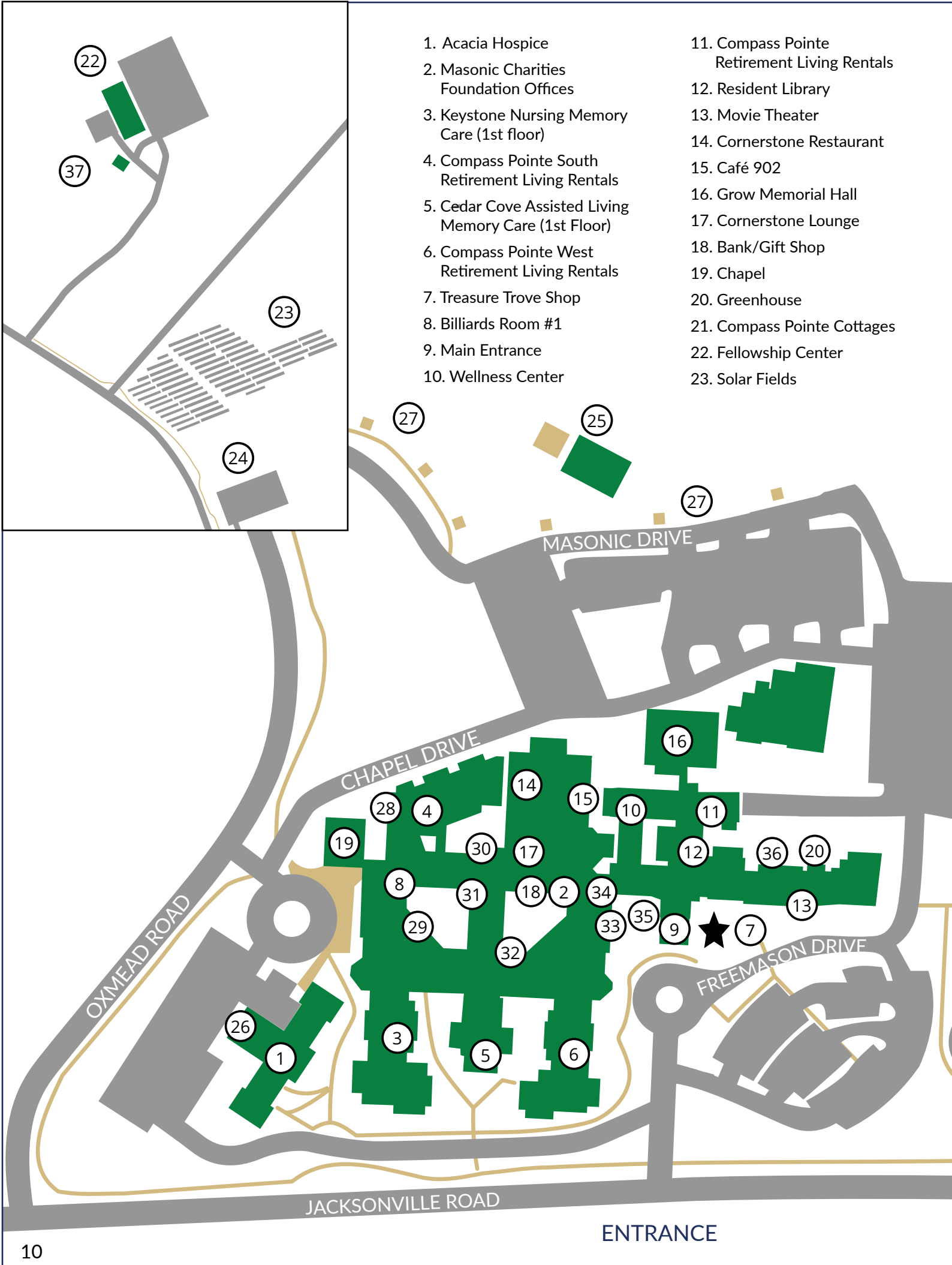
OXMEAD ROAD

FREEMASON DRIVE

JACKSONVILLE ROAD

ENTRANCE

- 1. Acacia Hospice
- 2. Masonic Charities Foundation Offices
- 3. Keystone Nursing Memory Care (1st floor)
- 4. Compass Pointe South Retirement Living Rentals
- 5. Cedar Cove Assisted Living Memory Care (1st Floor)
- 6. Compass Pointe West Retirement Living Rentals
- 7. Treasure Trove Shop
- 8. Billiards Room #1
- 9. Main Entrance
- 10. Wellness Center
- 11. Compass Pointe Retirement Living Rentals
- 12. Resident Library
- 13. Movie Theater
- 14. Cornerstone Restaurant
- 15. Café 902
- 16. Grow Memorial Hall
- 17. Cornerstone Lounge
- 18. Bank/Gift Shop
- 19. Chapel
- 20. Greenhouse
- 21. Compass Pointe Cottages
- 22. Fellowship Center
- 23. Solar Fields



MASONIC VILLAGE

at Burlington, NJ

- 24. RV, Boat, Camper Parking and Overflow Lot
- 25. Pavillion, Picnic Grounds and Resident Gardens
- 26. Verdon R. Skipper Children's Dyslexia Center
- 27. Exercise Stations
- 28. Art/Craft Studio
- 29. Woodshop
- 30. Salon 2 (2nd Floor)
- 31. Health Center
- 32. Rehab Center
- 33. Meditation Room
- 34. Salon 1 (2nd Floor)
- 35. Puzzle Room
- 36. Sewing Room
- 37. West Hill Farm





Our Mission

The Masonic Charity Foundation of New Jersey delivers personalized services and compassionate care, inspired by the spirit, ideals and values of Freemasonry, to promote the highest quality of life for Freemasons, families and others in the community.

Open to Serve. Open to All.

The Masonic Charity Foundation of New Jersey does not and will not discriminate on the basis of race, color, religion (creed), gender, gender expression, age, national origin (ancestry), limited English proficiency (LEP), disability, marital status, sexual orientation, military status, or any other protected status in any of its activities or operations.





Retirement Living Sales & Marketing Office

609-239-3890

info@njmasonic.org

Assisted Living

609-239-3888

admissions@njmasonic.org

Skilled Nursing Care & Memory Support Care

609-589-4078

admissions@njmasonic.org

Respite Care

609-239-3888

admissions@njmasonic.org

Acacia Hospice & Home Care

609-589-4444

hospice@njmasonic.org

Retirement Living Application Process

For assisted living, skilled nursing and other services, see contact information on reverse side.

STEP 1: Contact the Sales & Marketing Office to schedule an appointment and personal tour.

STEP 2: We will provide you with an application to complete and return within 14 days.

STEP 3: Within seven days of receiving your application, we'll follow up with any additional questions and/or recommendations.

STEP 4: Upon approval of your application, we'll send a copy of the resident agreement for you to review, sign and return within two weeks.

Entrance fee plan - Upon signing the resident agreement, 10% of the entrance fee (minus the application deposit) is payable on your reserved accommodation. If you decide not to continue with the application process, we'll refund your 10% payment (minus the application deposit) following a 30-day rescission period.

Within 90 days of signing the resident agreement, or upon occupancy, whichever is sooner, the balance of the entrance fee is due. Within 60 days, or upon occupancy, whichever is sooner, the first monthly service fee is due.

Rental plan - The balance of the first month's rent is due when you sign the resident agreement. Move in within 60 days.

Rental Plan Priority List Applications

If you'd like to plan for the future, you may submit an application for our rental plan priority list. Include a \$1,000 deposit to place your name on this list, and your deposit will be credited to your application deposit when you reserve a rental accommodation.

Directions

New Jersey Turnpike: Take Burlington exit #5. At first light, turn left onto Rte. 541. Proceed 1.8 miles, then bear right onto the Burlington Bypass. At second light, turn right onto Fountain Ave. At next light, turn right onto Jacksonville Road. Masonic Village is 1/4 mile on right.

Interstate 295: Take Burlington exit 47B. Stay in right lane after merging onto Rt. 541, and bear right onto the Burlington Bypass (by Jiffy Lube). At second light, turn right onto Fountain Ave. At next light, turn right onto Jacksonville Road. Masonic Village is 1/4 mile on right.

Route 130: Take Rt. 130 toward Burlington. Turn onto Jacksonville Road. (If traveling south, turn left on Federal Street; if proceeding north, turn right after Burlington City High School.) Masonic Village is 1.2 miles on the right.

Route 70: If coming from Philadelphia, use directions for Interstate 295 or Route 130 above.

From shore area: Take Rte. 206 North. From Red Lion Circle, go 10.4 miles and turn left at traffic light onto Rte. 670 (Jacksonville-Jobstown Rd., WaWa at light). Masonic Village is 5.5 miles on the left.



Open to serve. Open to all.

**902 Jacksonville Road
Burlington Township, NJ 08016
njmasonic.org**

